

IES Report

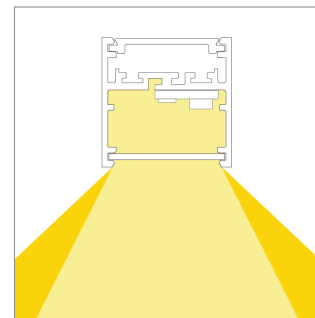
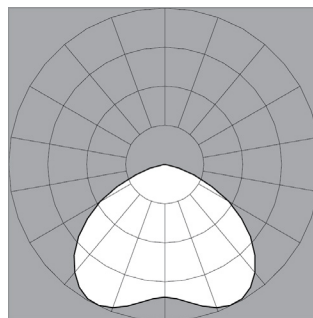
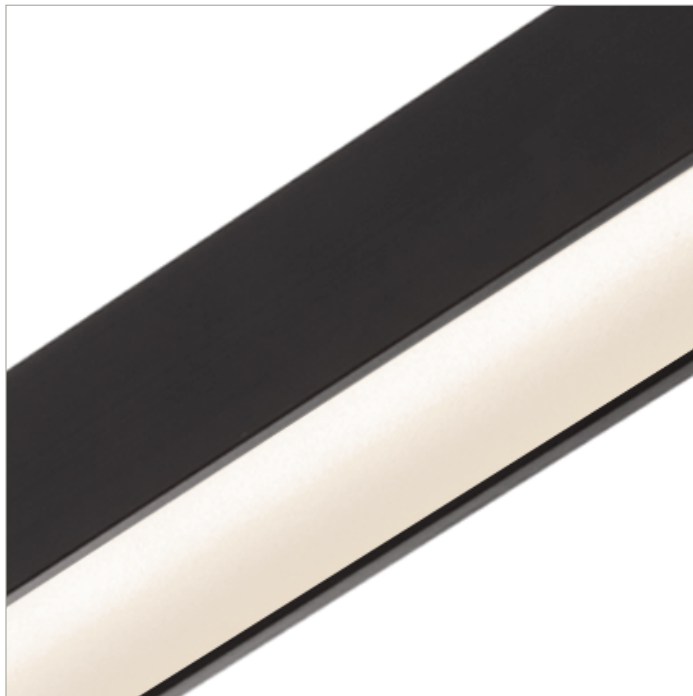
BoxRail® | 207 | 120° Flying, down | 80 CRI | LO

207-BX-XX-4-48-XX-XX-XX-X-X-Z-LO-35-G2-X-BL-X

	2700K	3000K	3500K	4000K
Efficacy - Lumens per Watt	108	111	113	113
Total Lumens, 4' rail length (1219mm)	1539	1588	1620	1620
Lumens per foot (305mm)	385	397	405	405
Input Power (W), 4' rail length (1219mm)	14.4	14.4	14.4	14.4
Watts per foot (305mm)	3.6	3.6	3.6	3.6
CRI	82	82	82	82

Due to the large number of options in Vode's product offering, most Vode IES reports are factored reports prepared from source reports. Source reports are the IES test reports prepared for Vode by an NVLAP accredited photometric test laboratory. Factored reports are based on data from the Vode source reports.

If the data above is in black, it is directly from a Vode source report. If it is in grey, it is factored from Vode source reports. Reference details on Vode source reports can be found on the [IES File Finder](#) page on [vode.com](#).



IES Report

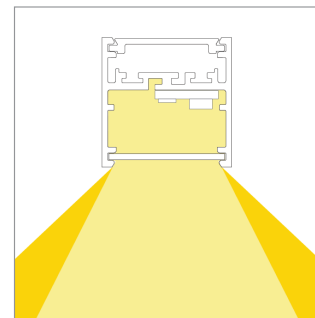
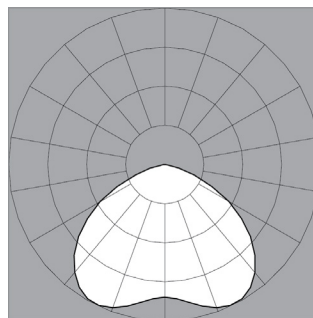
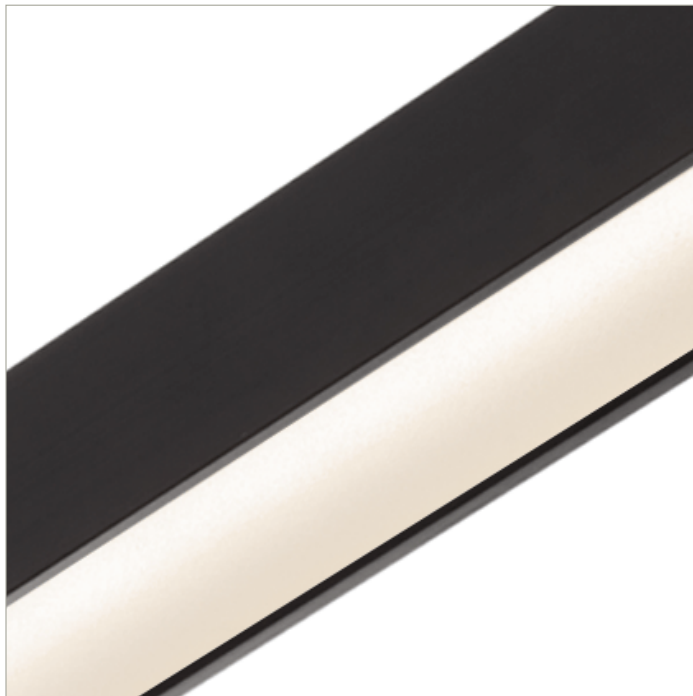
BoxRail® | 207 | 120° Flying, down | 80 CRI | SO

207-BX-XX-4-48-XX-XX-XX-X-X-Z-SO-35-G2-X-BL-X

	2700K	3000K	3500K	4000K
Efficacy - Lumens per Watt	122	126	129	129
Total Lumens, 4' rail length (1219mm)	3078	3176	3240	3240
Lumens per foot (305mm)	770	794	810	810
Input Power (W), 4' rail length (1219mm)	25.3	25.3	25.3	25.3
Watts per foot (305mm)	6.4	6.4	6.4	6.4
CRI	82	82	82	82

Due to the large number of options in Vode's product offering, most Vode IES reports are factored reports prepared from source reports. Source reports are the IES test reports prepared for Vode by an NVLAP accredited photometric test laboratory. Factored reports are based on data from the Vode source reports.

If the data above is in black, it is directly from a Vode source report. If it is in grey, it is factored from Vode source reports. Reference details on Vode source reports can be found on the [IES File Finder](#) page on [vode.com](#).



IES Report

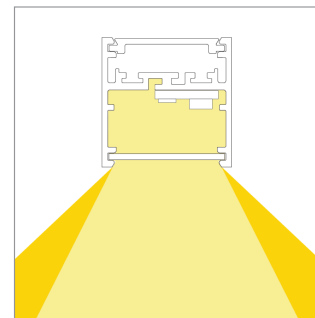
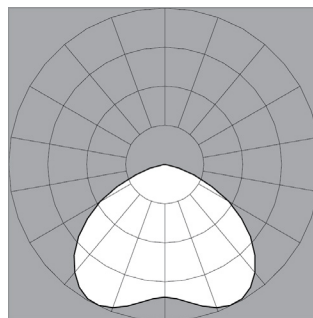
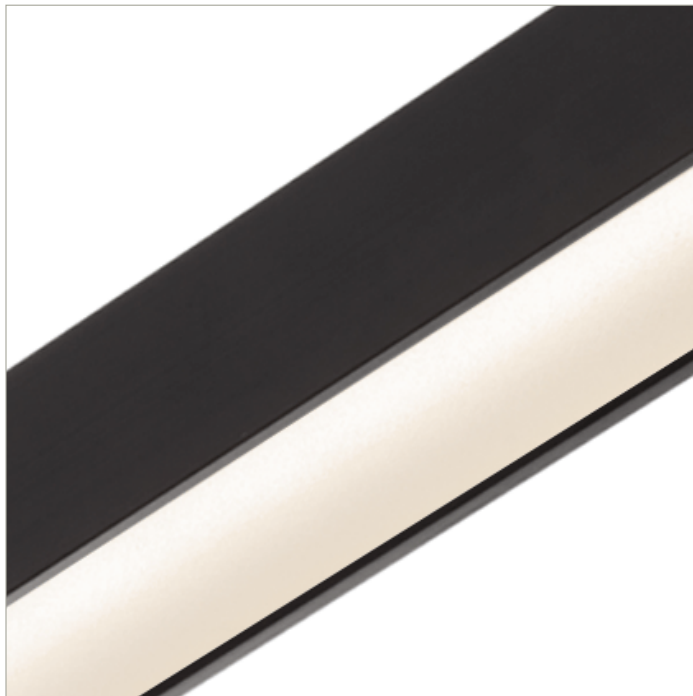
BoxRail® | 207 | 120° Flying, down | 80 CRI | HO

207-BX-XX-4-48-XX-XX-XX-X-X-Z-HO-35-G2-X-BL-X

	2700K	3000K	3500K	4000K
Efficacy - Lumens per Watt	114	117	120	120
Total Lumens, 4' rail length (1219mm)	5849	6034	6157	6157
Lumens per foot (305mm)	1462	1508	1539	1539
Input Power (W), 4' rail length (1219mm)	51.6	51.6	51.6	51.6
Watts per foot (305mm)	12.9	12.9	12.9	12.9
CRI	82	82	82	82

Due to the large number of options in Vode's product offering, most Vode IES reports are factored reports prepared from source reports. Source reports are the IES test reports prepared for Vode by an NVLAP accredited photometric test laboratory. Factored reports are based on data from the Vode source reports.

If the data above is in black, it is directly from a Vode source report. If it is in grey, it is factored from Vode source reports. Reference details on Vode source reports can be found on the [IES File Finder](#) page on [vode.com](#).



IES Report

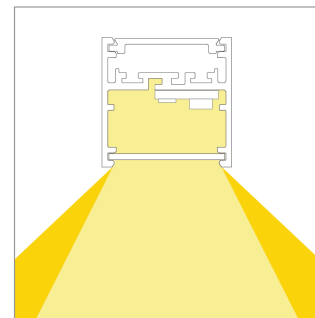
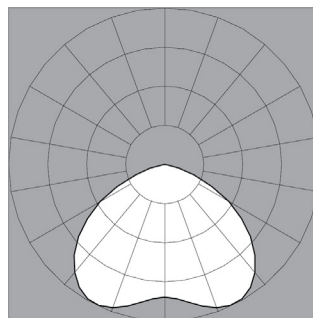
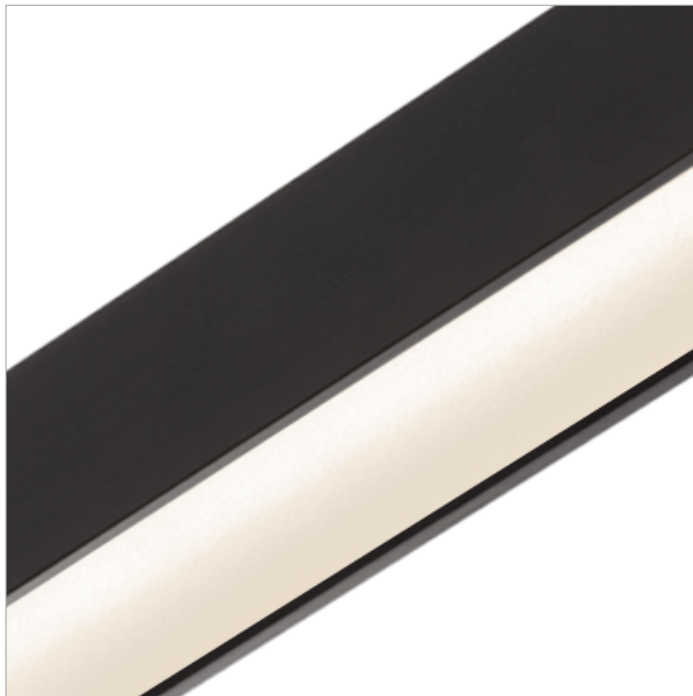
BoxRail® | 207 | 120° Flying, down | 90 CRI | LO

207-BX-XX-4-48-XX-XX-XX-X-X-Z-LO-359-G2-X-BL-X

	2700K	3000K	3500K	4000K
Efficacy - Lumens per Watt	93	96	98	99
Total Lumens, 4' rail length (1219mm)	1327	1369	1397	1411
Lumens per foot (305mm)	332	342	349	353
Input Power (W), 4' rail length (1219mm)	14.4	14.4	14.4	14.4
Watts per foot (305mm)	3.6	3.6	3.6	3.6
CRI	94	94	94	94

Due to the large number of options in Vode's product offering, most Vode IES reports are factored reports prepared from source reports. Source reports are the IES test reports prepared for Vode by an NVLAP accredited photometric test laboratory. Factored reports are based on data from the Vode source reports.

If the data above is in black, it is directly from a Vode source report. If it is in grey, it is factored from Vode source reports. Reference details on Vode source reports can be found on the [IES File Finder](#) page on [vode.com](#).



IES Report

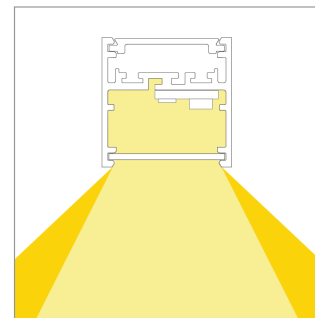
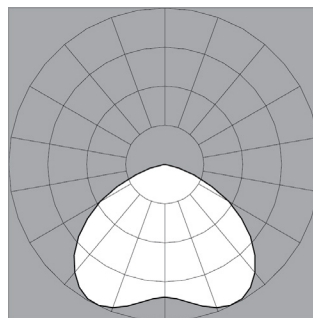
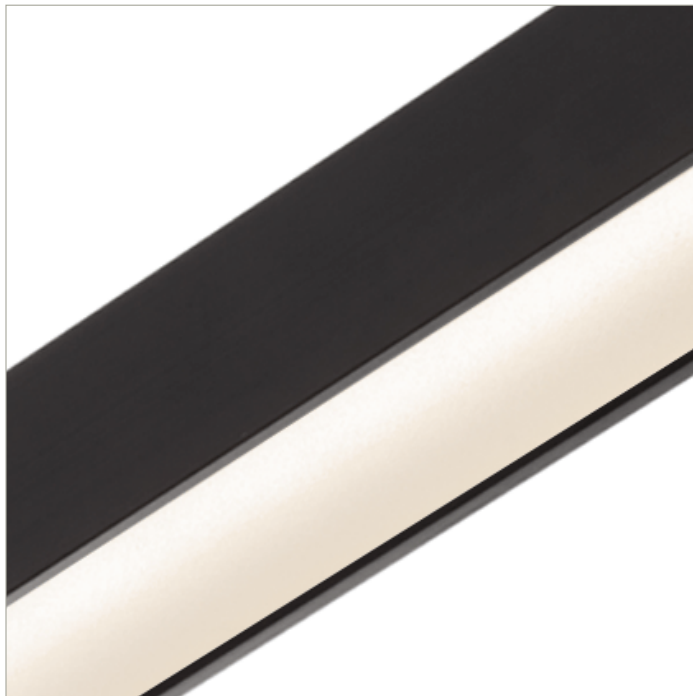
BoxRail® | 207 | 120° Flying, down | 90 CRI | SO

207-BX-XX-4-48-XX-XX-XX-X-X-Z-SO-359-G2-X-BL-X

	2700K	3000K	3500K	4000K
Efficacy - Lumens per Watt	106	109	111	112
Total Lumens, 4' rail length (1219mm)	2654	2738	2793	2821
Lumens per foot (305mm)	663	684	698	705
Input Power (W), 4' rail length (1219mm)	25.3	25.3	25.3	25.3
Watts per foot (305mm)	6.4	6.4	6.4	6.4
CRI	94	94	94	94

Due to the large number of options in Vode's product offering, most Vode IES reports are factored reports prepared from source reports. Source reports are the IES test reports prepared for Vode by an NVLAP accredited photometric test laboratory. Factored reports are based on data from the Vode source reports.

If the data above is in black, it is directly from a Vode source report. If it is in grey, it is factored from Vode source reports. Reference details on Vode source reports can be found on the [IES File Finder](#) page on [vode.com](#).



IES Report

BoxRail® | 207 | 120° Flying, down | 90 CRI | HO

207-BX-XX-4-48-XX-XX-XX-X-X-Z-HO-359-G2-X-BL-X

	2700K	3000K	3500K	4000K
Efficacy - Lumens per Watt	98	101	103	104
Total Lumens, 4' rail length (1219mm)	5042	5201	5308	5361
Lumens per foot (305mm)	1261	1300	1327	1340
Input Power (W), 4' rail length (1219mm)	51.6	51.6	51.6	51.6
Watts per foot (305mm)	12.9	12.9	12.9	12.9
CRI	94	94	94	94

Due to the large number of options in Vode's product offering, most Vode IES reports are factored reports prepared from source reports. Source reports are the IES test reports prepared for Vode by an NVLAP accredited photometric test laboratory. Factored reports are based on data from the Vode source reports.

If the data above is in black, it is directly from a Vode source report. If it is in grey, it is factored from Vode source reports. Reference details on Vode source reports can be found on the [IES File Finder](#) page on [vode.com](#).